

CIDOC-CRM URIs NAMESPACE PROPOSAL (using 303-redirect mechanism)

Christos Georgis
georgis@ics.forth.gr

Centre for Cultural Informatics / FORTH-ICS

17/01/2013

This presentation describes *CIDOC CRM generic (version independent) namespace proposal* for the interpretation of the CIDOC CRM as RDF schema:

<http://www.cidoc-crm.org/cidoc-crm>.

It provides details on current implementation (v5.0.4 or later), changes from previous namespace implementations and backward compatibility.

see also http://www.cidoc-crm.org/official_release_cidoc.html

Publishing the CIDOC-CRM Vocabulary

Each entity represented in a particular data set will lead to the minting of at least three URIs*:

- 1.a URI for the real-world object itself
- 2.a URI for a related information resource that describes the real-world object and has an HTML representation
- 3.a URI for a related information resource that describes the real-world object and has an RDF/XML representation

(* see chapter 2.3.1 and 4.1.3 in <http://linkeddatabook.com/editions/1.0/>)

We followed the W3C Working Group Note “**Best Practice Recipes for Publishing RDF Vocabularies**” (<http://www.w3.org/TR/swbp-vocab-pub/>)

**Extended configuration for a 'slash namespace'
using a single HTML document**

(<http://www.w3.org/TR/swbp-vocab-pub/#recipe4>)

<http://www.cidoc-crm.org/cidoc-crm>

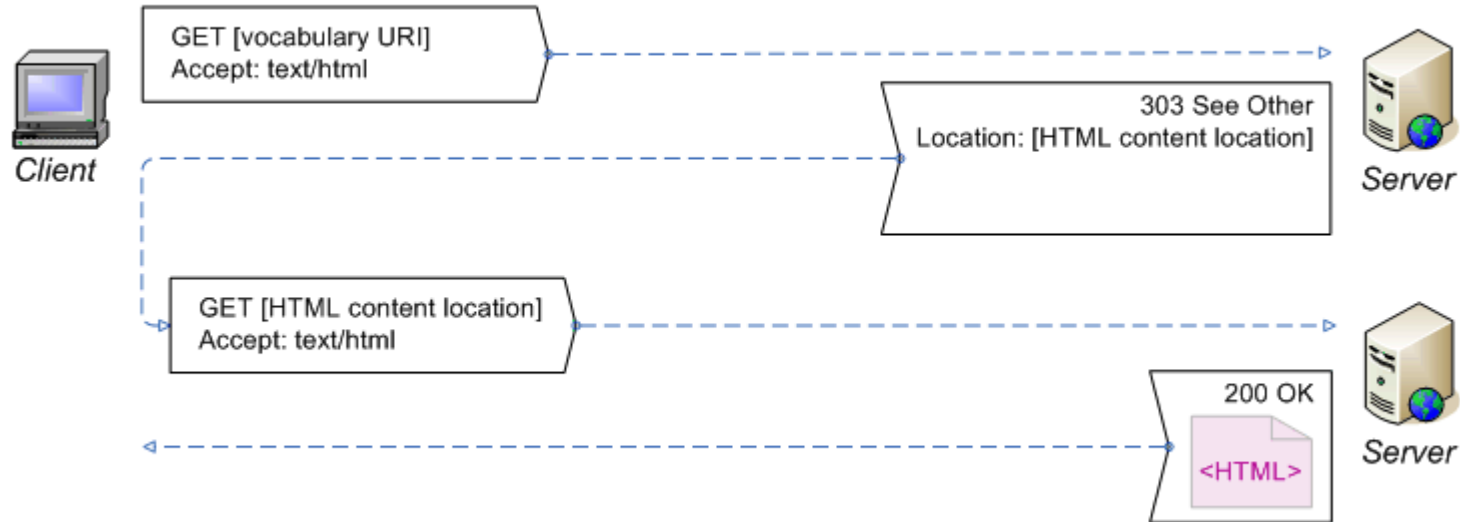
- Dereference the vocabulary URI, requesting HTML content
- Dereference the vocabulary URI, requesting RDF content
- Use as vocabulary namespace

http://www.cidoc-crm.org/cidoc-crm/E5_Event

http://www.cidoc-crm.org/cidoc-crm/P148_has_component

- Dereference the URI of a class or property, requesting HTML content
- Dereference the URI of a class or property, requesting RDF content

Dereference the vocabulary URI, requesting HTML content



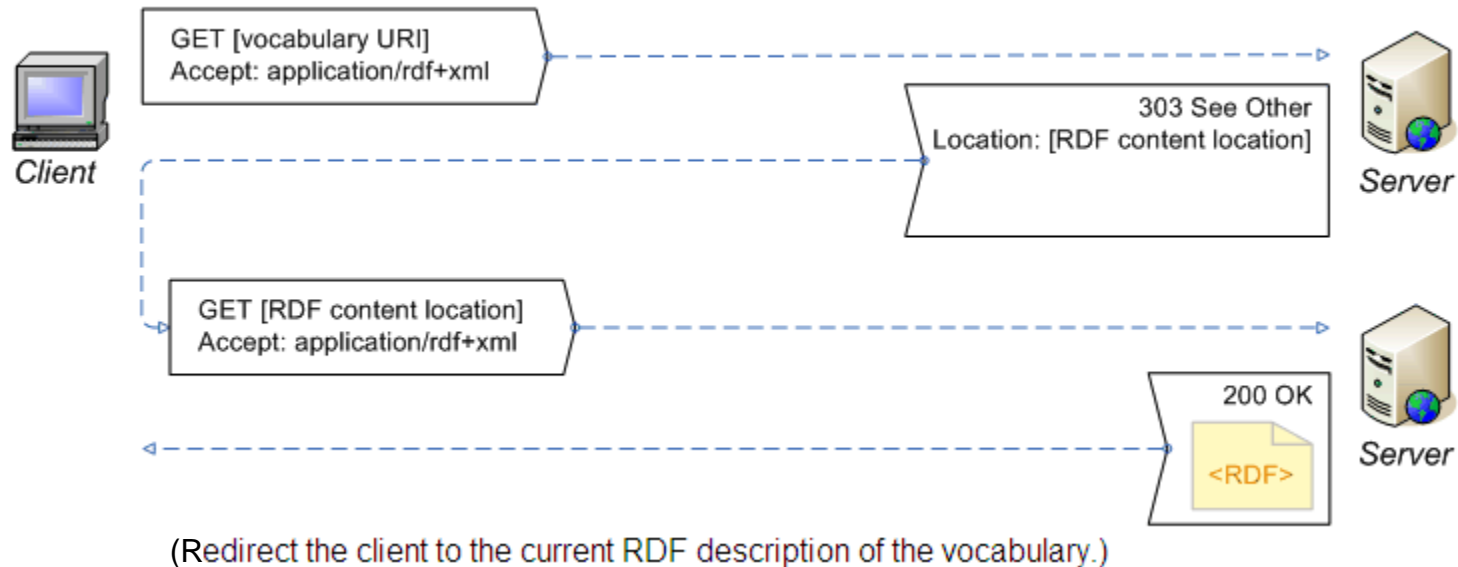
(Redirect the client to current HTML documentation for the vocabulary.)

<http://www.cidoc-crm.org/cidoc-crm>

redirects (303 see other) to

<http://www.cidoc-crm.org/html/5.0.4/cidoc-crm.html>

Dereference the vocabulary URI, requesting RDF content

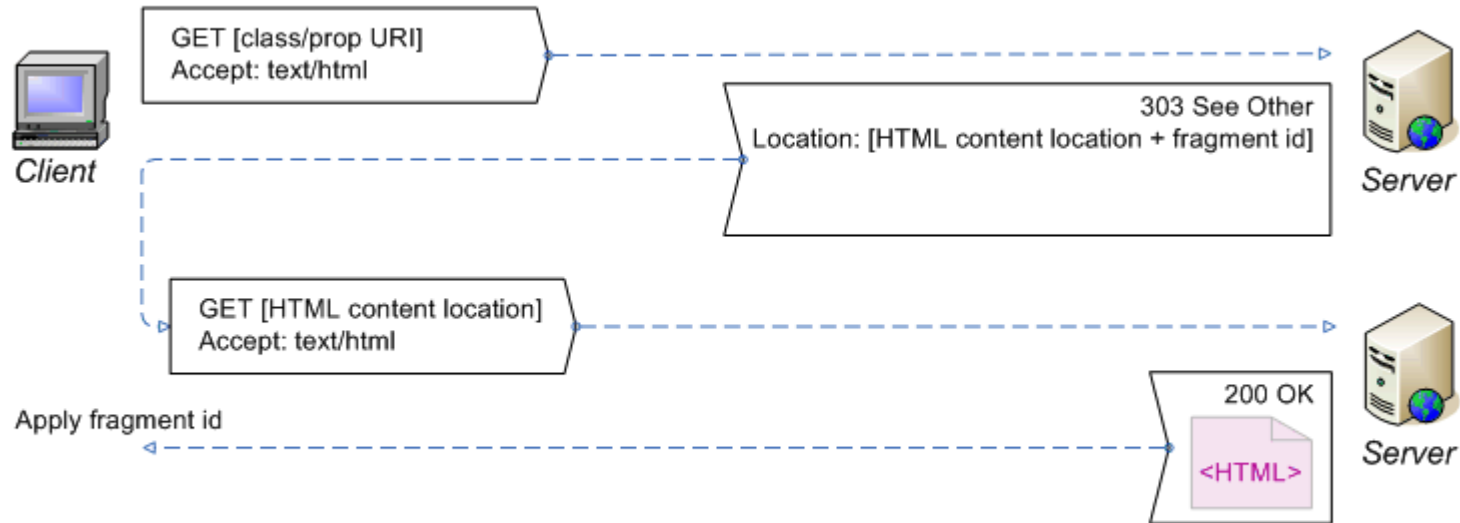


<http://www.cidoc-crm.org/cidoc-crm>

redirects (303 see other) to

<http://www.cidoc-crm.org/rdfs/5.0.4/cidoc-crm.rdf>

Dereference the URI of a class or property, requesting HTML content



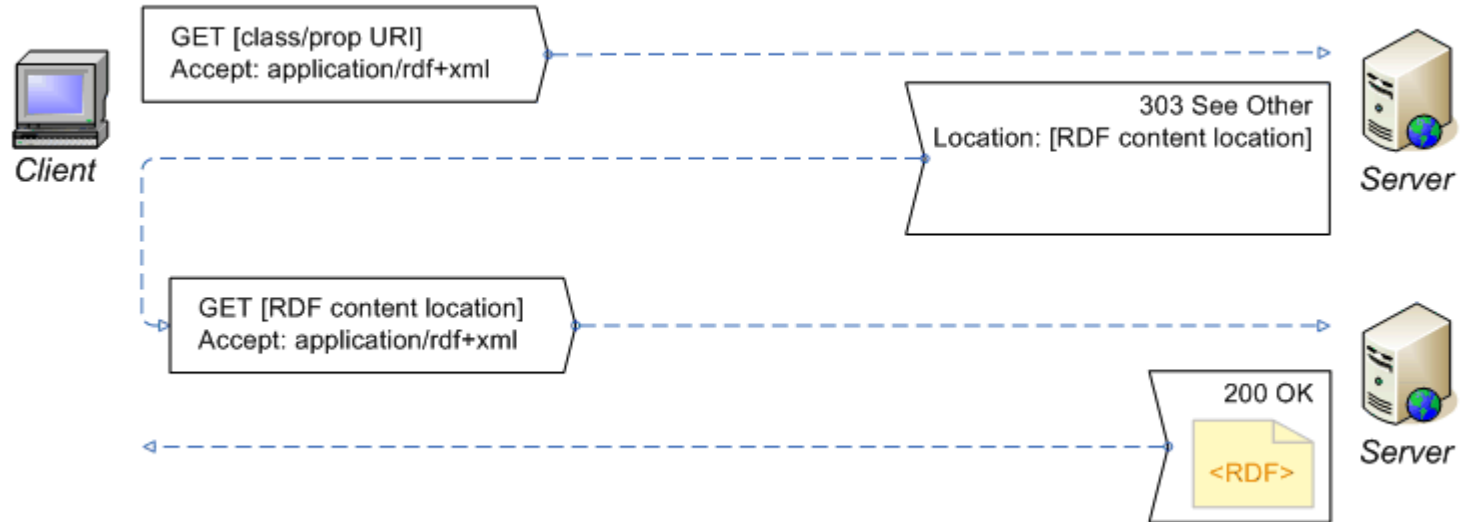
(Redirect the client to the fragment of current HTML documentation for the vocabulary relevant to the class or property.)

http://www.cidoc-crm.org/cidoc-crm/E5_Event

redirects (303 see other) to

<http://www.cidoc-crm.org/html/5.0.4/cidoc-crm.html#E5>

Dereference the URI of a class or property, requesting RDF content



(Redirect the client to the current RDF description of the vocabulary.)

http://www.cidoc-crm.org/cidoc-crm/E5_Event

redirects (303 see other) to

<http://www.cidoc-crm.org/rdfs/5.0.4/cidoc-crm.rdf#E5>

Backwards compatibility

URIs:

<http://www.cidoc-crm.org/cidoc-crm/E5>

[will also be valid and identical to](#)

http://www.cidoc-crm.org/cidoc-crm/E5_Event

<http://www.cidoc-crm.org/cidoc-crm/P148>

<http://www.cidoc-crm.org/cidoc-crm/P148F>

[will also be valid and identical to](#)

http://www.cidoc-crm.org/cidoc-crm/P148_has_component

and

<http://www.cidoc-crm.org/cidoc-crm/P148i>

<http://www.cidoc-crm.org/cidoc-crm/P148B>

[will also be valid and identical to](#)

http://www.cidoc-crm.org/cidoc-crm/P148i_is_component_of

Changes from previous proposal implementation

Changed URIs:

<http://www.cidoc-crm.org/crm-concepts/#E5> becomes

http://www.cidoc-crm.org/cidoc-crm/E5_Event

(and for properties:

<http://www.cidoc-crm.org/cidoc-crm/P11F>,

<http://www.cidoc-crm.org/cidoc-crm/P11B>)

<http://www.cidoc-crm.org/crm-concepts/> gets obsolete

<http://www.cidoc-crm.org/crm-concepts/#E5> gets obsolete

Changed namespaces:

<http://www.cidoc-crm.org/rdfs/cidoc-crm> becomes

<http://www.cidoc-crm.org/cidoc-crm>

<http://www.cidoc-crm.org/rdfs/cidoc-crm> gets obsolete

<http://www.cidoc-crm.org/rdfs/cidoc-crm-english-label> gets obsolete